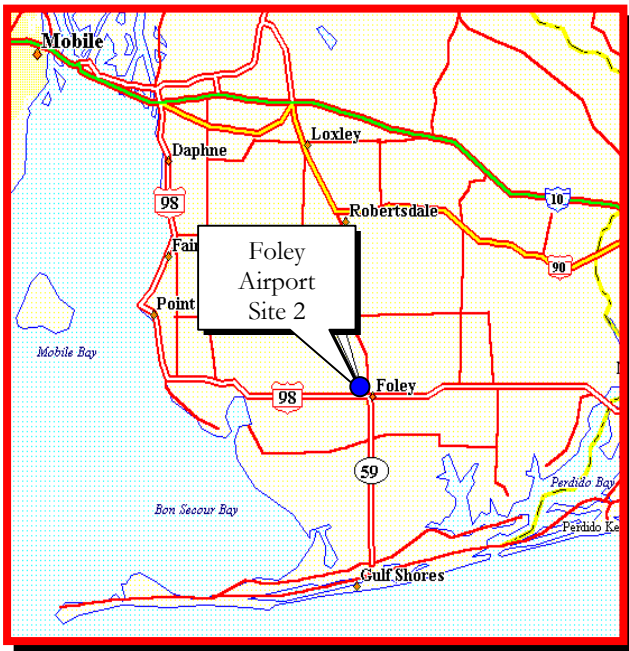
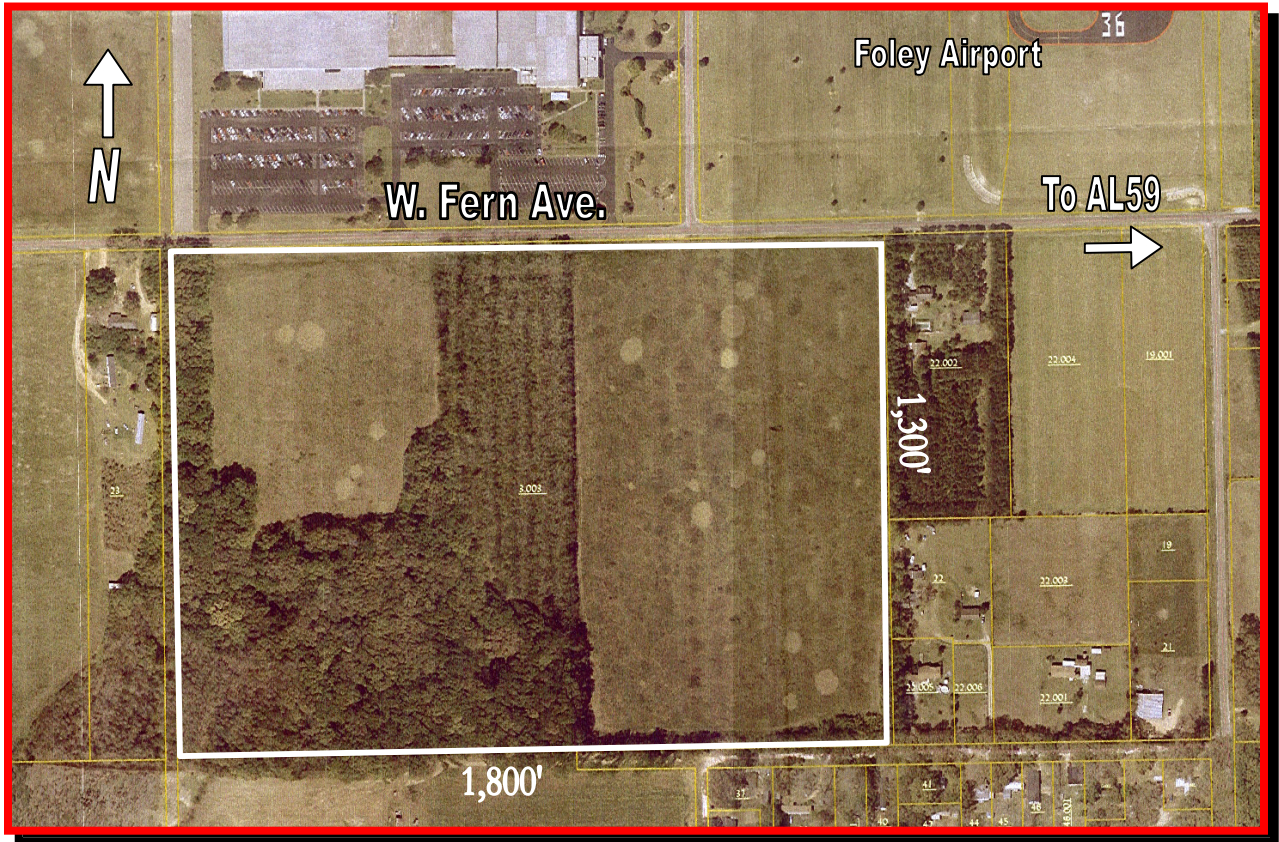


AVAILABLE SITE

FOLEY AIRPORT SITE 2
55 ACRES
FOLEY, ALABAMA



Map Not To Scale

Location: West Fern Avenue
Zoning: M-1: Light Industrial
Site Size: 55 Acres
Elevation Range: 72 Feet to 80 Feet
Highway: US 98: 1 Mile
Soil Type: Fine Sandy Loam and Local Alluvial Land

Utilities

Water: Riviera Utilities
Sewer: Riviera Utilities
Electric: Riviera Utilities
Natural Gas: Riviera Utilities
Telecom: Gulf Telephone
Police & Fire: City of Foley
Price: Call For Rates
Contact: John Foley
 Cunningham and Foley
 251-943-5989

The information contained herein has been obtained from reliable sources; however, no warranty or guarantee is expressed or implied.

AVAILABLE SITE

Site Name:	Foley Airport Site 2
Street Address:	W Fern Ave. Foley, AL
Within City Limits:	Yes
Latitude:	30° 25' 00"
Longitude:	87° 42' 00"
Inside Industrial Park:	No
Inside CMSA:	Yes: Mobile-Daphne-Fairhope
Inside Enterprise Zone:	No
Area of State:	Southwest

Distance In Miles From:	
Atlanta:	345
Memphis:	427
Nashville:	467
Birmingham:	275
Mobile:	38
Huntsville:	376
Montgomery:	186

GENERAL SITE DATA	
Total Acreage:	55 Acres
Available Acreage:	55 Acres
Largest Contiguous Tract:	55 Acres
Elevation Variation:	72 Feet to 80 Feet
Fire Rating Class:	3
Protective Covenants:	No
Environmental Data:	No
Soils Type:	Sandy Loam
Soil Borings Available:	No
100 Year Flood Plain:	No
Zoning:	M-1: Light Industrial
Former Land Use:	Agriculture

UTILITIES	
Gas:	Riviera Utilities
Distance To:	0 Miles
Size of Main:	2 Inch
PSI:	260 PSI
Water:	Riviera Utilities
Size of Main:	10 Inch – W Fern Ave
Static Pressure:	60 PSI
Sewer:	Riviera Utilities
Distance To:	0 Miles
Size of Main:	6 Inch
Excess Capacity:	100,000 GPD

UTILITIES	
Electric:	Riviera Utilities
Distribution:	N/A
Transmission:	N/A
Telecommunications:	Gulf Telephone
Fiber Optics:	No (Exchange nearby)
DSL:	Yes
T-1:	Yes

HIGHWAY					
Interstate	Miles	Federal	Miles	State	Miles
I-10	18	98	1	59	1
I-65	36	90	11	104	10

RAIL	
At Site:	No
Distance to Nearest Service:	Mobile: 30 Miles
Spur:	No

WATERWAY	
Nearest Port Facility:	Mobile: 30 Miles
Channel Depth:	40 Feet

AIR	
Nearest Commercial Service:	Pensacola Airport
Distance:	34 Miles
Major Carriers:	Airtran, Delta, Continental, USAir, Northwest
Nearest Commercial Service:	Mobile Regional Airport
Distance:	46 Miles
	ASA, Continental Express, Delta, Northwest Airlin, Skywest, USAir

Price:	Call For Rates
Date Quoted:	5/1/04

CONTACTS	
Owner or Realtor:	John Foley Jr. Cunningham and Foley 251-943-5989
Local Contact:	Lance LaCour BCEDA 251-947-2445

The information contained herein has been obtained from reliable sources; however, no warranty or guarantee is expressed or implied.